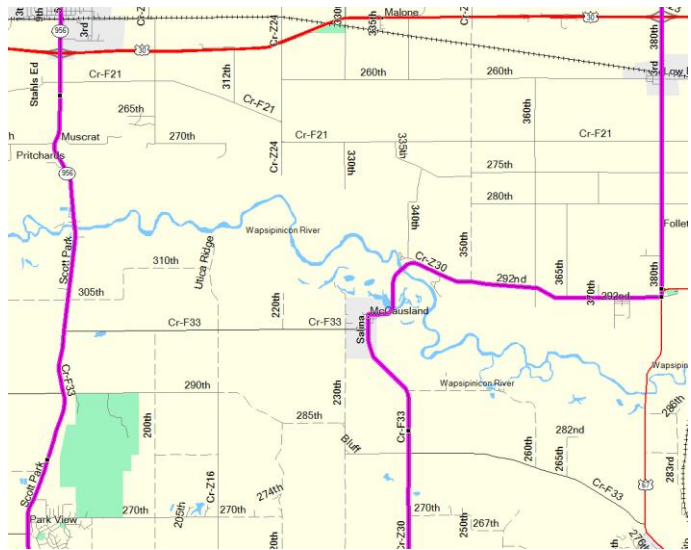
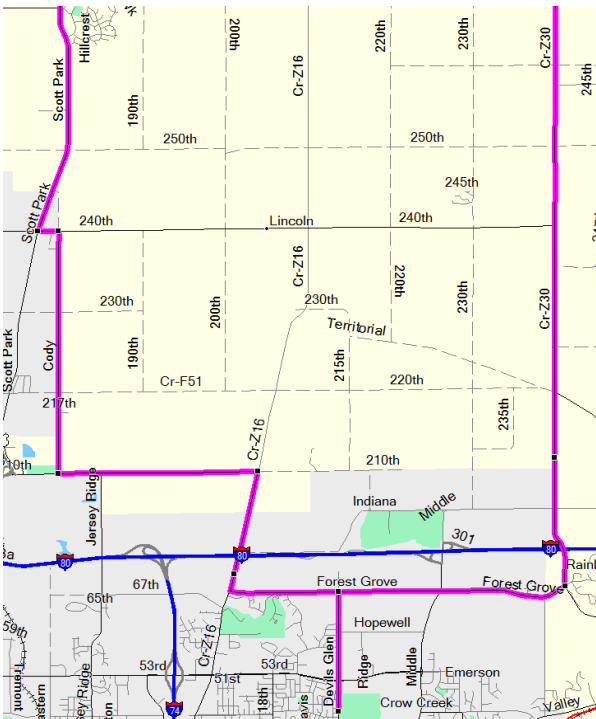
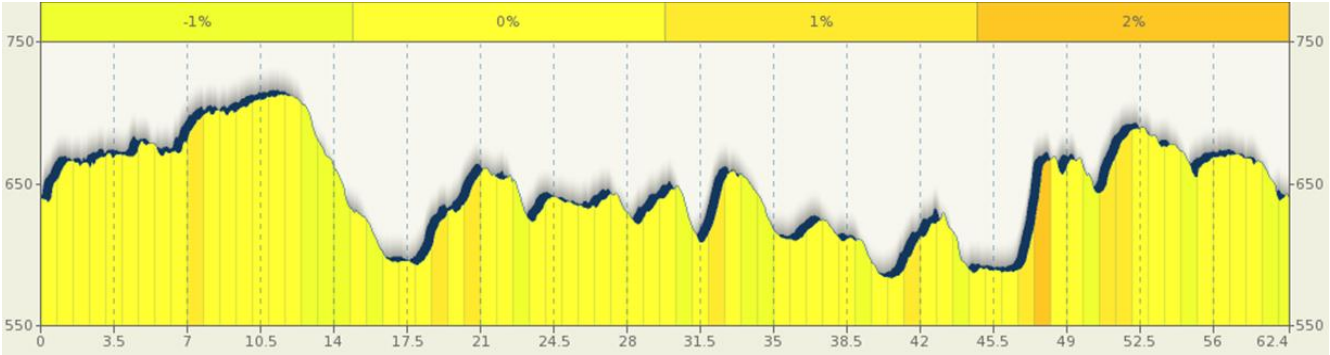
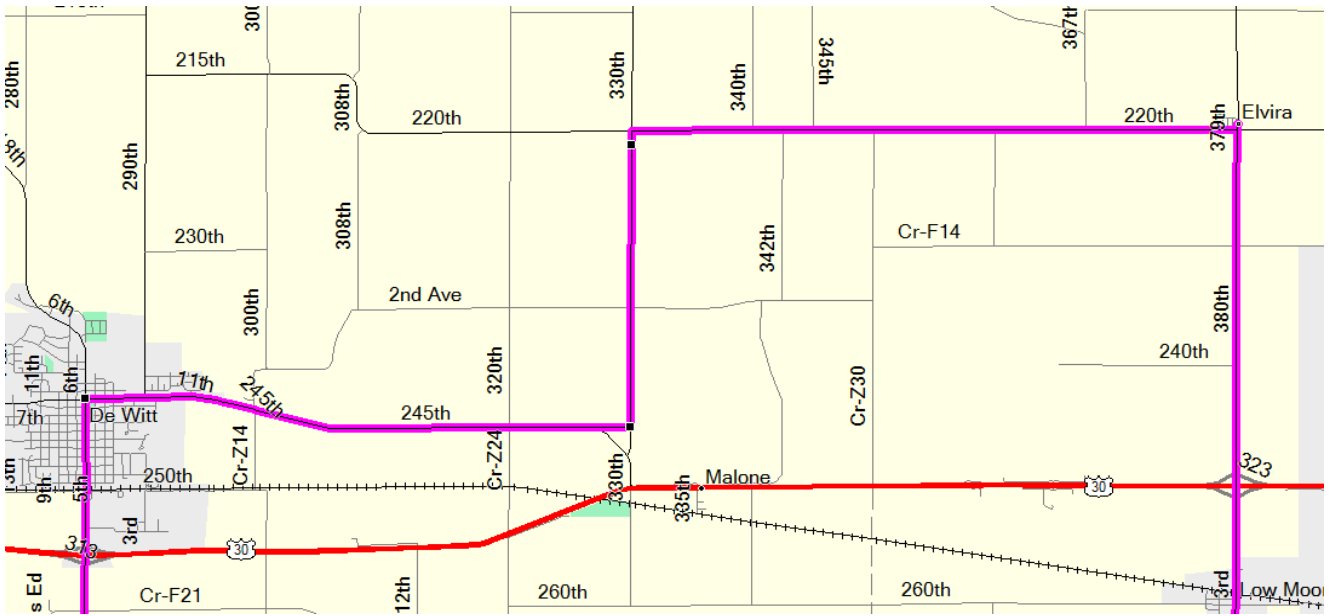


DEWITT AND ELVIRA

62.6 miles, 1900ft elevation gain. Starting point: Crow Creek Park

LEG MILES	TOT MILES	TURN	WAYPOINT
0	0.0	R	Leave Crow Creek Park onto Devil's Glen
1.6	1.6	L	Forest Grove
1.3	2.9	R	Utica Ridge Rd
1.5	4.4	L	Mt.Joy Rd
2.4	6.8	R	180th Ave
3.0	9.8	L	LeClaire Rd.
0.3	10.1	R	Scott Park Rd./Veterans Hiway
12.1	22.2	R	11th St/DeWitt [Services]
4.5	26.7	L	330th Ave
2.5	29.2	R	220th St
5.1	34.3	R	380th Ave/Elvira
7.4	41.7	S	Rt.67
0.1	41.8	R	292nd St/Z-30/Immediate Right
5.4	47.2	L	Z-33/McCausland [Services]
11.0	58.2	R	Forest Grove
2.8	61.0	L	Devils Glen Rd
1.6	62.6	L	Crow Creek Park





Max elevation: 801ft Min elevation: 594ft

PROPERTY OF QUAD CITIES BICYCLE CLUB 2011

